



# PartMaster Turning

**PartMaster Turning for the engineer who demands more !  
More Flexibility - More Powerful machining operations - More  
Choice of Tools.**

**Tooling** - Turn, Bore, Groove, Trepan, Button, Partoff, Threading and Drills.

PartMaster Turning "knows" the tool geometry, not just the tool nose radius and won't allow overcutting.

## Facing

Simply choose the start and end points for the Facing operation from the screen, set the cut depth and the operation is complete. Fast and effective, includes the option to cut past the centre line to eliminate pips.

## Turning

Roughing the part couldn't be simpler, set the maximum and minimum Z & X coordinates, the system won't encroach onto the workpiece. set the Z and X finishing allowances and choose to keep out of "undercuts" if required.

## Profiling

Advanced Profiling with full G41/G42 tool nose radius compensation, differential finishing in Z & X. Approach and Runoff settings. Partial machining. Forward and Reverse, Internal and External.

## Grooving

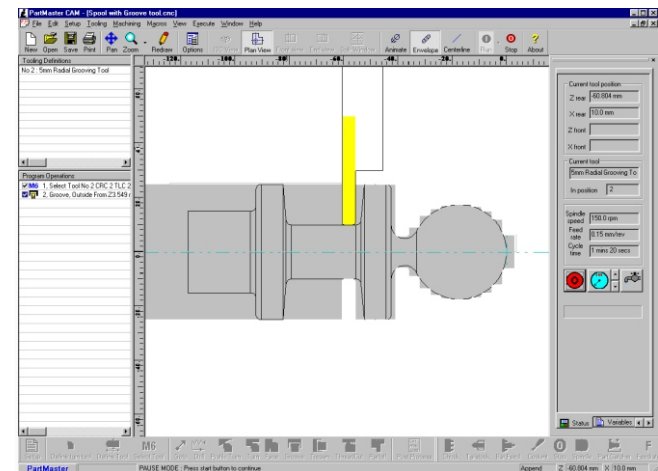
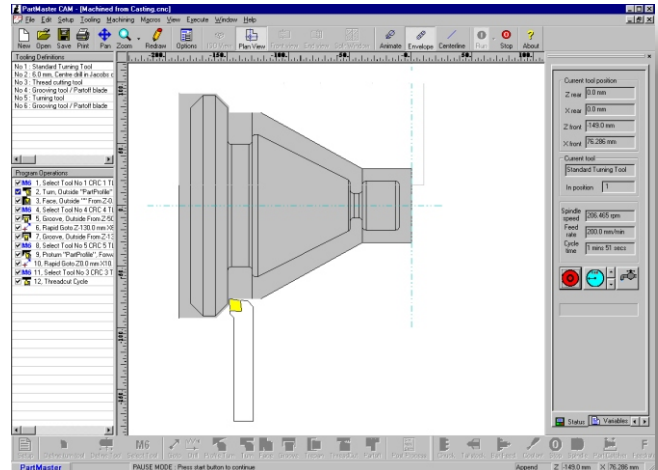
Machine regular Grooves with Lip and Root details, or use a Grooving tool on **ANY** shape !

## Advanced Roughing

Roughing from a Billet or from **ANY** shaped Casting or Forging. Superb toolpath optimization.

## Threading

For internal and external threads, single or multi start threads - options for Feed Angle, Runoff and Acme type threads.



## Post-Processing & Canned Cycles

PartMaster Turning will output your controllers Canned Cycles such as G71, G72 for Roughing, G76 for Threading, G75 for Grooving etc. A comprehensive range of Post-Processors are supplied as standard.

## RS232 Communications

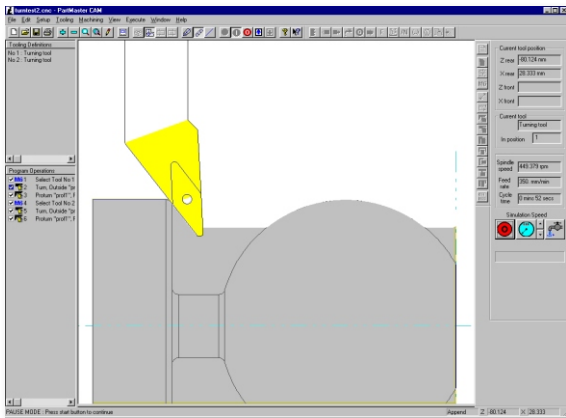
Of course a RS232 module is included !.

Visit our website to watch a movie showing how simply and quickly you can get your machine tool cutting metal [www.dolphincadcam.com](http://www.dolphincadcam.com)

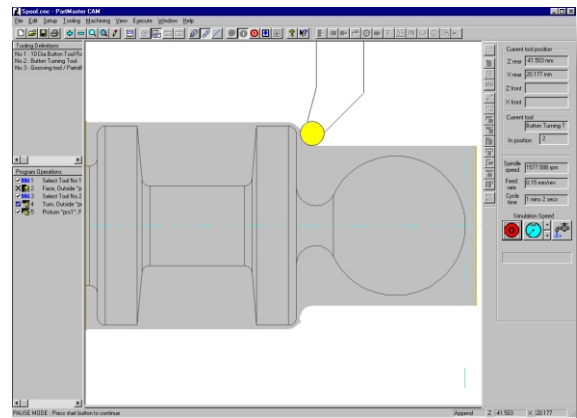
The Engineers' CAD/CAM Solution



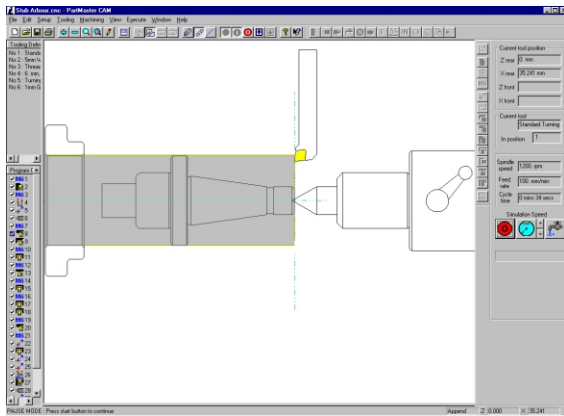
# PartMaster Turning



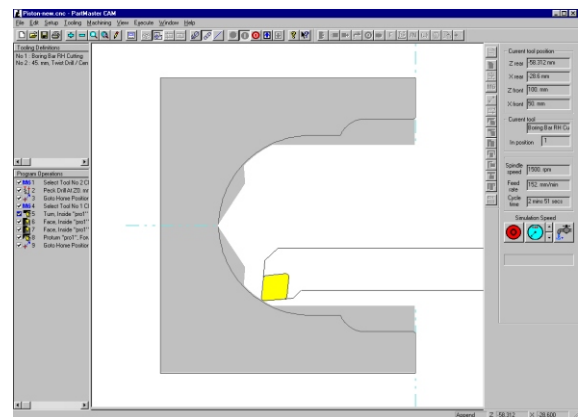
Using 'Rear Approach' tooling allows components to be completed in a single hit.



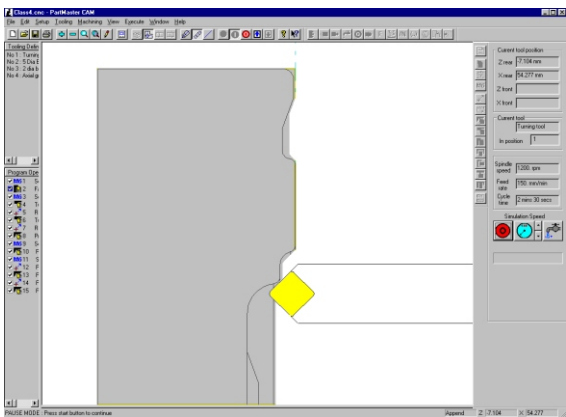
When machining complex Profiles, the tool tip geometry is known and produces 'Gouge free' machining.



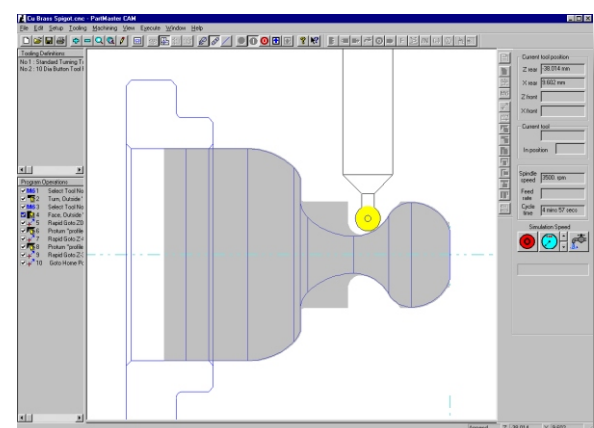
Clear and concise graphics of the Profile, Stock material, Chuck and Tailstock allow for easy program verification.



Using Boring tools with front or rear approach enables complex internal Profiles to be machined accurately.



Machining on the front face of a component.



Using a Button Tool to Rough and Finish the component..

Dolphin Cadcam Systems Ltd  
7 South Dean Road  
Kilmarnock. KA3 7RE UK.

T:- 01563 543989  
E:- info@dolphincadcam.com  
W:- www.dolphincadcam.com

The Engineers' CADCAM Solution